



Q•Care[®] ORAL CLEANSING & SUCTIONING SYSTEMS

Q•Care[®] ORAL CLEANSING & SUCTIONING SYSTEMS

Setup Guide for Thumb Port Tools



Q•CARE SYSTEMS
With Thumb Port Tools

Q•CARE Rx SYSTEMS
With 3M™ Peridex™
(Chlorhexidine Gluconate 0.12%)
Oral Rinse in a single-unit dose



Watch oral care training videos online at:

www.sageproducts.com/products/oral-hygiene/video.cfm?name=qcareRX

Q•Care Tools

Y-CONNECTOR



Use to connect to single-port canister. Allows for dedicated oral suctioning.

COVERED YANKAUER WITH SUCTION HANDLE



Helps remove debris & secretions. Sheathed to protect yankauer between uses.

SUCTION ORAL TOOTHBRUSH



Helps remove dental plaque.

SUCTION ORAL SWAB



Cleans oral cavity & helps remove secretions which may lead to oral colonization.

SUCTION CATHETER

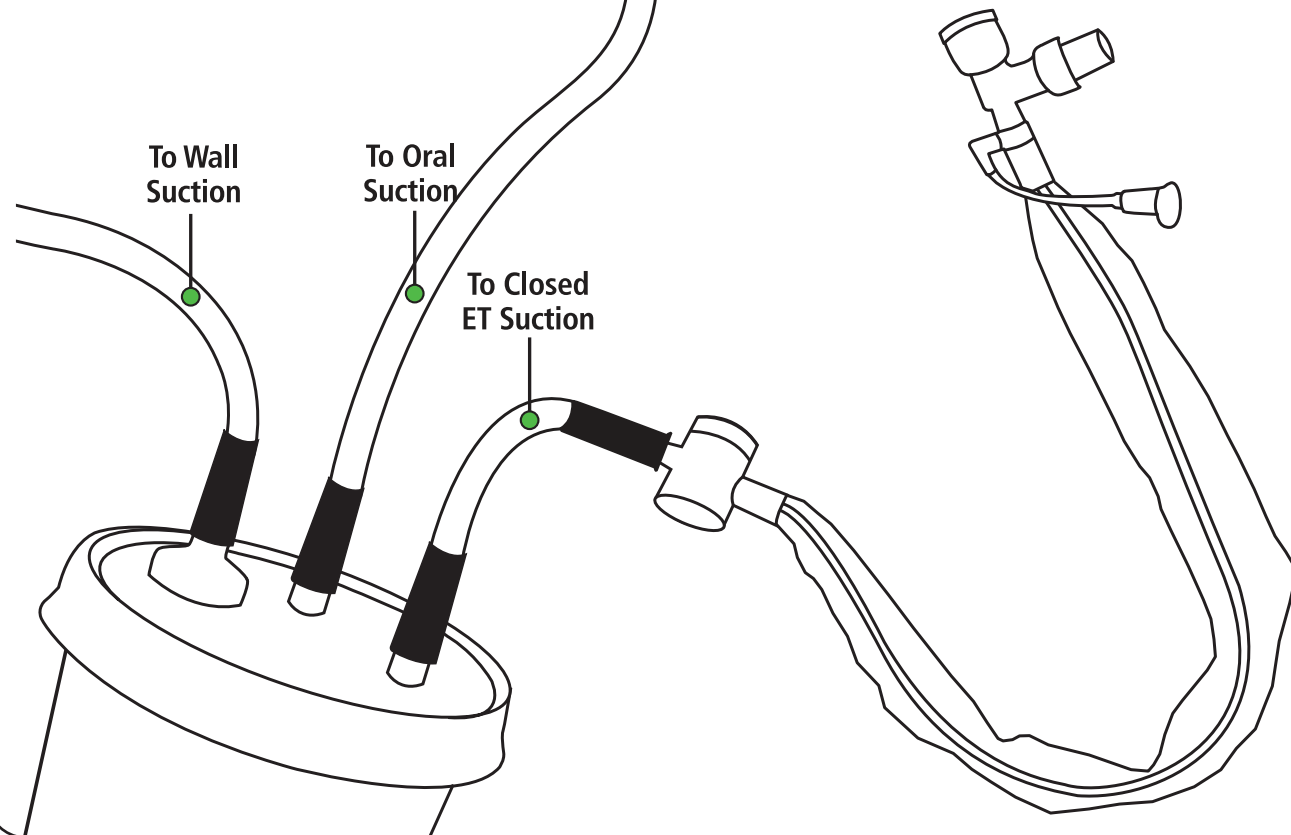
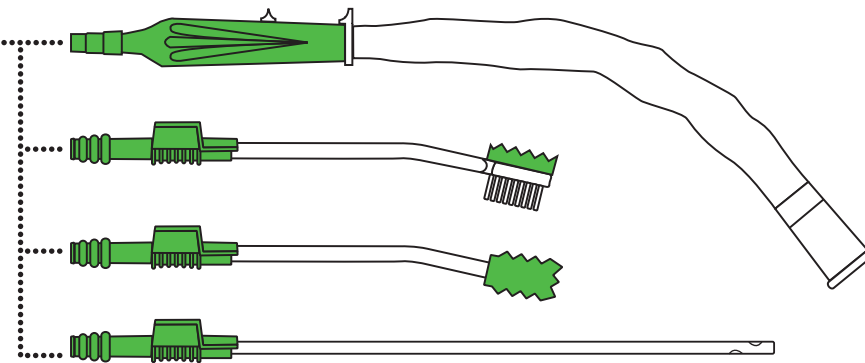
Not included with reorder #6402 and #6404



Helps remove secretions from the oropharyngeal cavity.

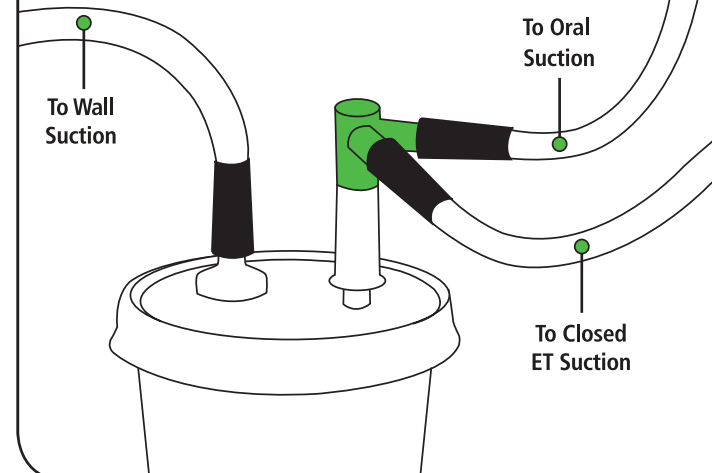
Setup Instructions: Multi-Port Canister

Cleansing and Suctioning Tools attach directly to standard suction lines.



* Using Y-Connector

- Use when additional suction port on canister is needed.



IMPORTANT: Both ports on Y-Connector must be utilized or a loss of suction power can occur.

1

Connect tubing to suction port on canister.
If additional port is needed, attach Y-Connector to suction port.

2

Connect the Covered Yankauer to tubing.

3

Connecting tools:
Detach the Covered Yankauer from tubing. Attach the desired cleansing and suctioning tools directly to tubing.